

### Multiple Shock Kits



GM HD Multiple Shock Kit



GM Silverado Multiple Shock Kit



Ford Dual Shock Kit



Ford Super Duty Dual Shock Kit

**CHEVROLET/GMC**

Year	Application	Height	Bracket Kit	Multiple Shock Hoops (2)	Type	ES Series	MX6	MX6R	Reservoir
99-07	Silverado/Sierra 8 lug HD pickup 4WD	6"	—	51210B	Triple (1)	320500	MX6088	MX6064R	EXP3906
99-07	Silverado / Sierra 6 lug pickup 4WD	6"	—	51297B	Triple (1)	320500	MX6088	MX6064R	EXP3906
00-06	Avalanche/Suburban/ Yukon XL 2500 8 lug	6"	—	51210B	Triple (1)	320500	MX6088	MX6064R	EXP3906
00-06	Avalanche / Suburban / Tahoe Yukon / Yukon XL 1500 6 lug	6"	—	51297B	Triple (1)	320500	MX6088	MX6064R	EXP3906
88-99	K Series 1500 / 2500 pickup 6 lug 4WD	6"	—	51294B	Triple (1)	320500	MX6088	MX6064R	EXP3906
88-99	K Series 1500 Suburban 6 lug 4WD	6"	—	51294B	Triple (1)	320500	MX6088	MX6064R	EXP3906
95-99	K Series Tahoe / Yukon 4WD	6"	—	51294B	Triple (1)	320500	MX6088	MX6064R	EXP3906
88-97	K Series 1500 All 4WD	4"	—	51294B	Triple (1)	318509	—	—	—
73-91	1/2, 3/4 & 1 ton 4WD	6"	58103	—	Dual	325509 (x2)	—	—	—
73-91	1/2, 3/4 & 1 ton 4WD	4"	58103	—	Dual	324509 (x2)	—	—	—
73-91	1/2, 3/4 & 1 ton 4WD	2.5"	58103	—	Dual	322500 (x2)	—	—	—
73-91	1/2, 3/4 & 1 ton 4WD	0"	58103	—	Dual	319500 (x2)	—	—	—

**FORD**

Year	Application	Height	Bracket Kit	Hoop w/ Bracket	Type	ES Series	MX6	MX6R	Reservoir
05-07	F250/F350 Super Duty 4WD	8"	—	52450B (2)	Dual	927500	MX6128	MX6066R	—
05-07	F250/F350 Super Duty 4WD	6"	—	52440B (2)	Dual	925509	MX6129	MX6065R	—
99-04	F250/F350 Super Duty 4WD	8.5"	52410B (3)	52420B	Dual	929500(x2)	MX6005(x2)	MX6067R	EXP3206
99-04	F250/F350 Super Duty 4WD	6.5"	52410B (3)	52420B	Dual	929500(x2)	MX6121(x2)	MX6066R	EXP3206
99-04	F250/F350 Super Duty 4WD	4"	52410B (3)	52420B	Dual	926500(x2)	MX6017(x2)	MX6065R	EXP3204
99-04	F250/F350 Super Duty 4WD	2"	52410B (3)	52420B	Dual	924509(x2)	MX6004(x2)	—	—
99-04	F250/F350 Super Duty 4WD	0"	52410B (3)	52420B	Dual	922500(x4)	MX6035(x4)	—	—

Footnotes:

(1) The factory location shock must be used. (2) 4 shock absorbers must be ordered separately. (3) Customers with existing P/N 52410 shock bracket can add hoop kit P/N 52430B

\* Some multiple shock systems are for use on Pro Comp suspension equipped vehicles only, while others can fit stock vehicles as well. Please check description listing for footnotes.

### Limit Straps

Description	Length	P/N
1 pair/universal (triple thick)	11"	5113
1 pair/universal	16"	5162
1 pair/universal	17"	5172
1 pair/universal	18"	5182
1 pair/universal	20"	5202
1 pair/universal (triple thick)	21.5"	5213
1 pair/universal	22"	5222
1 pair/universal	24"	5242
1 pair/universal	26"	5262
1 pair/universal	29"	5292
1 pair/universal	31"	5312
1 universal weld on tab kit w/ hardware		5400



Heavy-duty nylon straps help protect off-road suspension systems by preventing over-extension of suspension components. Most commonly, a limit strap is approximately .5" to 1" shorter than the full extension of the suspension and is mounted to the upper and lower shock eyebolts. For other custom applications, a 9/16" mounting hole is provided for a secure and simple installation. Limit straps are sold as pairs and are available in a variety of lengths.



### Stainless Steel Skid Plates

Stainless Skid Plate Kits provide optimum undercarriage protection for your vehicle without adding unnecessary weight. Formed from heavy gauge material these "brush finished" stainless steel plates add the ultimate finishing touch to any suspension system. For specific application, Pro Comp also offers in conjunction with, and sometimes separate, a heavy gauge steel chassis supported skid pan. Skid Plate Kits are available for most popular Pro Comp Suspension equipped vehicles and come complete with all mounting hardware and detailed installation instructions. Note: Vehicle must have factory bumper for proper fitment.

Year	Application	Pro Comp Kit	Stainless Skid Plate P/N	Steel Chassis Skid Pan P/N
<b>Chevrolet/GMC</b>				
99-07	Silverado / Sierra 1500 6 lug 2WD	6"	51103	—
99-07	Silverado / Sierra 1500HD / 2500HD 8 lug 4WD / 2WD	6"	51100	—
99-07	Silverado / Sierra 1500 6 lug 4WD	6"	51199	—
88-99	K Series 6 lug 4WD w/one piece front crossmember (use with 51080B kit)	6"	51196	—
88-99	K Series 6 lug / 8 lug 4WD (use with early 51094 / 51894 kits) w/multiple piece front crossmember	6"	51188	Included
<b>Dodge</b>				
02-05	Ram 1500 (w/Pro Comp 56702BMX kit)	5"	56102	—
<b>Ford</b>				
04-07	F150 4WD	6"	52104	Included
04-07	F150 2WD	6"	52102	—
97-03	F150 2WD	6"	52100	—
97-98	F150 / F250 (Light Duty 7 lug) 4WD	4"	52197	52199
93-97	Ranger 2WD	5"	52189	—
<b>Toyota</b>				
05-07	Tacoma 4WD / Pre Runner 2WD	6"	57196	—
96-04	Tacoma 4WD / Pre Runner 2WD	4"	57195	—
93-98	T100 4WD	4"	57193	—
86-95	Pickup & 4Runner 4WD	4"	57190	—

SUSPENSION ACCESSORIES

**Traction Bars**



Our race style, double tube design traction bars are functional and great looking. They are specifically engineered for lifted vehicles. While most traction bars are designed to only reduce axle wrap-up, Pro Comp Suspension Traction Bars are designed to allow suspension articulation as well. Our exclusive reverse hourglass shaped urethane bushings allow the needed stability to reduce spring wrap, while allowing the traction bars to flex for articulation. Select GM applications are engineered to accommodate twin Pro Comp ES Series shock absorbers per side. With the addition of this Shock Option Kit greater suspension damping is added to the rear axle. Traction bars by Pro Comp Suspension are Real Bolt On Enhancements!

Traction Bars mount to the frame and axle. The rear axle mounting plate is positioned between the axle spring plate and lift block. This mounting system results in a secure installation while losing no valuable ground clearance common in most "street" traction bar kits. Mounting kits are required and sold separately.

Year	Application	Traction Bars	Mounting Kit (1)	Shock Option Set
<b>CHEVROLET/GMC</b>				
99-07	Silverado / Sierra 8 lug HD pickup 4WD (4)	72400B	71200B	—
99-07	Silverado / Sierra 6 lug pickup 4WD	71000B	71199B	81099B (3)
88-99	K Series 2500 / 3500 pickup 8 lug 4WD	71000B	71282B	—
92-99	K Series Suburban 8 lug 4WD	71000B	71282B	—
88-99	K Series 1500 / 2500 pickup 6 lug 4WD Ext. cab shortbed (2)	71000B	71182B	—
88-99	K Series 1500 / 2500 pickup 6 lug 4WD std. cab	71000B	71182B	—
95-99	K Series 4 door Tahoe / Yukon 4WD	71000B	71199B	—
<b>FORD</b>				
04-07	F150 4WD Super Cab	72500B	72095B	—
04-07	F150 4WD Super Crew	72500B	72096B	—
99-06	Super Duty 4WD	72400B	72099B	—
02-03	F150 Super Crew shortbed 2WD	72300B	72090B	—
83-97	Ranger Std./Extra Cab 2WD/4WD	72000B	71199B	—
80-97	F250/F350 Extra Cab/Crew Cab 4WD	72400B	72099B	—
<b>NISSAN</b>				
04-07	Titan Crew Cab 4WD/2WD	72300B	79090B	—
<b>TOYOTA</b>				
05-07	Tacoma 4WD Extra Cab / 2wd Pre Runner	72500B	72083B	—
96-04	Tacoma 4WD Extra Cab / 2wd Pre Runner	71000B	77182B	—
86-95	Pickup Std./Extra Cab 4WD w/2.5" wide u-bolts	77000B	77082B	87089B (3)
80-85	Pickup Std./Extra Cab 2WD & 4WD	77000B	72082B	—

- Note:
1. Lift blocks required for installation of traction bar mounting kits.
  2. Includes standard cab and extended cab with 8' bed.
  3. Kit includes four ES Series shock absorbers and mounting hardware.
  4. Use traction bar P/N 71000B for standard cab long bed.



**Pitman and Steering Arms**

Year	Application	Drop	Drag link	Pit Arm	Steering Arm
73-91	GM (w/Dana 44 & Corporate Axle only)	4"	GDL40	—	GM400
03-07	Dodge 2500 4WD	4"	—	DC400	—
80-98	Ford F100/F350/Bronco 2WD/4WD (Twin I-beam/straight axle w/power steering only)	4"	—	FD400 (3)	—
05-07	Ford Super Duty 4WD	4"	—	FD700	—
00-04	Ford Super Duty/Excursion 4WD (1)	4"	—	FD500 (4)	—
99-05	Ford Super Duty/Excursion 2WD	4"	—	FD600 (4)	—
83-97	Ford Bronco II/Explorer/Ranger	4"	—	FD400	—
99-04	Ford Super Duty 2WD (2) 2WD (Twin I-beam w/power steering only)	4"	—	FD400	—
86-06	Jeep Wrangler YJ/TJ 4WD (w/power steering only)	4"	—	YJ400	—
76-86	Jeep CJ5/CJ7/CJ8 4WD (w/power steering only)	4"	—	CJ400	—
79-85	Toyota 4WD	4"	TOY400	—	—

(1) Fits vehicles made after April 99' (2) Pre 4/99' production date (3) FD400 fits a steering shaft measuring 1.5/16 (1.313)  
(4) FD500/FD600 fits a steering shaft measuring 1 3/8 (1.375).



**Brake Line Kits & Specifications**



Stainless Steel Brake Line kits are designed to replace stock rubber brake hoses on vehicles with increased ride heights of 4"- 6". Steel braided lines will not swell under increased braking pressure demanded by larger tires thus delivering a quick and positive response. All Pro Comp Suspension stainless hoses comply with D.O.T. specifications and are packaged as complete kits for the front and rear of vehicles. NOTE: Although extended length hoses are necessary on many suspension kit installations, labor should be performed by a certified brake mechanic only. Care must be taken to assure no interference of moving parts is encountered, as well as, proper routing and length to eliminate any possibility of bind throughout steering and suspension cycles.

Year	Application	Complete Kit P/N	(Hose Length Less Fittings)		
			Left Front	Right Front	Rear
<b>CHEVROLET - GMC</b>					
73-78 1/2	1/2 ton 4WD p/u Blazer, Jimmy, Suburban	7215	23.50" (AB)	23.50" (AB)	17.25" (E)
79-86 1/2	1/2 ton 4WD p/u Blazer, Jimmy, Suburban	7220	25.00" (AB)	25.00" (AB)	17.25" (E)
87-99	1/2 ton 4WD p/u Blazer, Jimmy, Suburban (1)	7225	24.00" (AB)	24.00" (AB)	17.50" (E)
88-98	1/2 ton 2WD Chevy-GMC p/u	7225	24.00" (AB)	24.00" (AB)	—
<b>FORD</b>					
91-94	2WD & 4WD Explorer	7305	28.00" (AB)	28.00" (AB)	29.75" (E)
89-96	2WD & 4WD Ranger, Bronco II	7310	25.25" (A)	26.00" (B)	26.25" (E)
86-88 & 97	2WD & 4WD Ranger, Bronco II	7315	29.50" (AB)	29.50" (AB)	24.50" (E)
83-85	2WD & 4WD Ranger, Bronco II	7320	27.75" (AB)	27.75" (AB)	29.75" (E)
93-96	Ford F150 p/u, Bronco (2)	7325	23.00" (A)	23.00" (B)	22.00" (E)
80-89	2WD & 4WD 1/2 ton p/u, Bronco	7330	26.00" (AB)	26.00" (AB)	24.75" (E)
78-79	4WD 1/2 ton p/u, Bronco	7335	21.00" (F)	29.00" (E)	—
66-77	4WD Bronco	7340	21.50" (F)	20.50" (E)	—
90-96	2WD & 4WD 1/2 ton p/u, Bronco (2)	7350	23.00" (AB)	23.00" (AB)	22.00" (E)
<b>JEOP</b>					
82-86	Jeep CJ5, CJ7	7405	18.00" (AB)	18.00" (AB)	18.00" (E)
77-81	Jeep CJ5, CJ7 (w/ disc brakes only)	7410	18.00" (AB)	18.00" (AB)	18.00" (E)
79-91	J10, J20 Cherokee/Wagoneer full-size	7415	21.00" (AB)	21.00" (AB)	23.25" (E)
74-78	J10, J20 Cherokee/Wagoneer full-size	7420	21.00" (AB)	21.00" (AB)	23.25" (E)
87-96	Jeep Wrangler YJ	7425	24.00" (AB)	24.00" (AB)	17.00" (E)
97-06	Jeep Wrangler TJ	7450	19.50" (AB)	19.50" (AB)	21.50" (E)
<b>NISSAN</b>					
04-07	Titan 4WD	7460	22.50" (AB)	22.50" (AB)	—
<b>TOYOTA</b>					
79-95	Toyota 4WD p/u	7210	22.50" (AB)	22.50" (AB)	20.50" (E)
86-95	Toyota 4WD 4Runner	7210	22.50" (AB)	22.50" (AB)	20.50" (E)
93-98	Toyota 4WD T100	7212	21.00" (AB)	21.00" (AB)	23.00" (E)
96-05	Toyota 4WD Tacoma	7213	25.25" (AB)	25.25" (AB)	24.00" (E)

**NOTE:** Replacement brakelines can be ordered individually by using the P/N and the letter designation (For example: a left front line for a '73 Chevrolet 4WD Pickup would be a #7215AB) A = Left Front Brake Hose • B = Right Front Brake Hose • AB = Left and Right Front use the same hose C = Left Rear Hose • D = Right Rear Hose • E = Center Rear Hose • F = Center Front Hose

1. Old body style
2. P/N 7325 is required when left front brakeline has 3-way T-block. P/N 7350 is used when both front brakelines are identical.

### Urethane Bump Stops

**6904x** Hex style bump stops fit in the tightest of spaces to eliminate metal to metal contact. Great for lowered trucks and cars. (2 per set)

**6905x** Bullet style bump stops fit in the tightest of spaces to eliminate metal to metal contact. Great for lowered trucks and cars. 1 1/16" tall, 2 1/32" diameter. (2 per set)

**6906x** Medium progressive bump stop. This bump stop has been specially designed to be trimmed to fit many different applications. 2 1/8" tall, 1 5/16" diameter. (2 per set)

**6908x** Medium competition bump stops are designed as rugged as our large style. 3 1/2" tall, 4 1/2" long, 2 1/2" wide. (2 per set)

**6909x** Large competition bump stops are specially designed with our large reinforced steel mounting plate to withstand the toughest terrain. 4 1/2" tall, 4 1/2" long, 2 1/2" wide. (2 per set) **Note:** X Denotes color option ( 1= Red, 0= Black )



### Urethane Shock Bushings

**600006** Standard hourglass shock eye 5/8" I.D. (individual)

**600026** Standard hourglass shock eye 3/4" I.D. (individual)

**68010** 5/8" I.D. hourglass late GM/Chevy upper shock loop bushing & sleeve.

**68021** 5/8" I.D. hourglass early GM/Chevy upper shock loop bushing & sleeve.

### Shock Boots



Description	Bulk P/N	Single P/N	Pair P/N
Royal Blue	10100	11100	12100
Hot Pink	10105	11105	12105
Fluorescent Orange	10110	11110	12110
Teal	10114	11114	12114
Fluorescent Green	10115	11115	12115
Light Blue	10120	11120	12120
White	10124	11124	12124
Light Purple	10125	11125	12125
Grey	10126	11126	12126
Black	10127	11127	12127
Red	10128	11128	12128
Yellow	10129	11129	12129
Forest Green	10130	11130	12130
Dark Purple	10131	11131	12131
Raspberry	10132	11132	12132
Clear	10133	11133	12133
Mini-Black	10147	11147	12147
Zip-Ties	10999	—	—

**Note:** Bulk boots are available in case lots only (100PCS/CASE). Bulk Zip-Ties are available in case lots of 100 pieces/case. Zip-Ties are included in single and pair packages.

### Spring Bushing Replacement Kits

Kit for 2 Spring		Front Bushing	Rear Bushing	Front Sleeve	Rear Sleeve
69201	11211	612011 (x4)	612021 (x4)	51034 (x2)	51058 (x2)
Front leaf spring bushings & sleeves for 73-91 4WD 1/2 & 3/4 ton p/u/ Blazer / Jimmy / Suburban					
69201	11411	612011 (x4)	612021 (x4)	51034 (x2)	51058 (x2)
Front leaf spring bushings & sleeves for 73-91 4WD 1/2 & 3/4 ton p/u/ Blazer / Jimmy / Suburban					
69201	11511	612011 (x4)	612021 (x4)	51034 (x2)	51058 (x2)
Front leaf spring bushings & sleeves for 73-91 4WD 1/2 & 3/4 ton p/u/ Blazer / Jimmy / Suburban					
69221	31252	652021 (x4)	652021 (x4)	—	—
Front leaf spring bushings 64-80 4WD Landcruiser					
69221	31253	652021 (x4)	652021 (x4)	—	—
Rear leaf spring bushings for 64-80 4WD Landcruiser					
—	33311	—	632061 (x4)	—	—
Rear leaf spring bushing for 79-85 4WD Toyota p/u/4Runner					
69231	51212	632011 (x4)	632021 (x4)	55089-2 (x2)	—
Front leaf spring bushings & sleeve for 76-86 4WD Jeep CJ5/CJ7					
69241	51213	632051 (x2)	632051 (x2)	51096 (x2)	51096 (x2)
Front leaf spring bushings & sleeves for 53-75 4WD Jeep CJ5/CJ6/DJ5					
69251	51222	632031 (x4)	632041 (x4)	55089-2 (x2)	—
Rear leaf spring bushings & sleeve for 76-86 4WD Jeep CJ5/CJ7					
69241	51223	632051 (x2)	632051 (x2)	51096 (x2)	51096 (x2)
Rear leaf spring bushings & sleeves for 53-75 4WD Jeep CJ5/CJ6/DJ5					
69261	51313	632031 (x4)	632031 (x4)	55089-2 (x2)	55089-1 (x2)
Front leaf spring bushings & sleeves for 86-96 4WD Jeep YJ Wrangler					
69261	51323	632031 (x4)	632031 (x4)	55089-2 (x2)	55089-1 (x2)
Rear leaf spring bushings & sleeves for 86-96 4WD Jeep YJ Wrangler					
69231	51412	632021 (x4)	632011 (x4)	55089-2 (x2)	—
Front leaf spring bushings & sleeve for 76-86 4WD Jeep CJ5/CJ7					
69261	51413	632031 (x4)	632031 (x4)	55089-2 (x2)	55089-1 (x2)
Front leaf spring bushings & sleeves for 86-96 4WD Jeep YJ Wrangler					
69251	51422	632031 (x4)	632041 (x4)	55089-2 (x2)	—
Rear leaf spring bushings & sleeve for 76-86 4WD Jeep CJ5/CJ7					
69261	51423	632031 (x4)	632031 (x4)	55089-2 (x2)	55089-1 (x2)
Rear leaf spring bushings & sleeves for 86-96 4WD Jeep YJ Wrangler					
69271	31211L	650211 (x4)	652011 (x4)	—	—
Front leaf spring bushings for 79-85 4WD p/u / 4Runner					
69271	31212R	652011 (x4)	652011 (x4)	—	—
Front leaf spring bushings for 79-85 4WD p/u / 4Runner					
69271	31221L	652011 (x4)	652011 (x4)	—	—
Front leaf spring bushings for 79-85 4WD p/u / 4Runner					
69271	31222R	652011 (x4)	652011 (x4)	—	—
Front leaf spring bushings for 79-85 4WD p/u / 4Runner					

All kits only fit Pro Comp leaf springs and are available in red only.

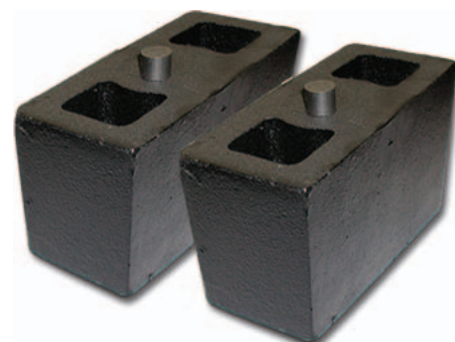
### Rear Add-a-Leaf Kits

Pro Comp Suspension Add-a-Leaf kits are the perfect solution when 1.5" to 2.5" of raised height is required. Pro Comp Suspension Rear add-a-Leafs can be used in conjunction with lift blocks in order to strengthen the integrity of an existing leaf spring pack. This is very helpful when trying to renew the height and strength of a rear spring suffering fatigue due to age and heavy loads. For some vehicles, Pro Comp Suspension offers both long and short add-a-leaf kits. The long add-a-leaf will usually install directly under the main leaf (with mounting eyes) allowing it to work towards eliminating spring/ axle wrap-up while keeping the vehicle's existing ride quality. All kits include two single leaves and new centering bolts (unless otherwise noted). Degree shims may be required to realign rear driveshaft angles. Pro Comp Suspension recommends using new U-bolts, flat washers, high nuts and spring clips whenever modifying or changing leaf spring packs.

Year	Description	P/N Rear (Long)	P/N Rear (Short)
<b>Chevrolet / GMC</b>			
99-07	1/2, 3/4 ton p/u 4WD	13127	—
88-99	1/2, 3/4 & 1 ton p/u (IFS) 4WD	13124	—
92-99	Blazer /Jimmy / Suburban /Tahoe /Yukon (IFS) 4WD	13124	—
82-98	S-series all 2WD / 4WD	13127	13120
71-96	1/2, 3/4 & 1 ton Van 2WD	—	13127
73-87	1/2, 3/4 & 1 ton p/u 4WD (straight axle)	13125	13122
69-72	1/2, 3/4 & 1 ton p/u 4WD (straight axle)	—	13122
73-91	Blazer / Jimmy / Suburban 4WD	13125	13122
69-72	Blazer / Jimmy 4WD	—	13122
72-82	Luv p/u 2WD	—	13120
<b>Dodge</b>			
94-01	1500 p/u 2WD / 4WD	—	13120
61-93	1500 / 2500 / 3500 p/u / Ramcharger / Trail Duster 4WD	—	13122
71-92	B-series Van 2WD	—	13122
<b>Ford</b>			
99-02	Ranger 2WD	13133	13120
99-07	F250 / F350 Super Duty / Excursion 2WD / 4WD	13128	13126
04-07	F150 4WD/2WD	13134	—
97-03	F150 / F250 Light Duty 4WD (w/ 2.5" rear spring)	13132	—
73-96	F150 / F250 F350 4WD (w/ 3" rear spring)	13130 (Dual Leaf)	—
7712-97	F250 / F350 4WD (w/ 3" rear spring)	13128	—
73-96	F100 / F150 4WD (w/ 3" rear spring)	13128	—
62-96	F100 / F150 2WD (w/ 2.5" rear spring)	—	13122
65-96	3-series Van 2WD	—	13122
78-96	Bronco 4WD	13128	—
83-97	Ranger / Explorer 2WD / 4WD	—	13120
72-84	Courier 2WD	—	13120
57-79	F250 2WD (w/ 2.5" rear spring)	—	13122
66-77	Bronco 4WD	—	13122
67-77	F250 4WD (w/ 2.5" rear spring)	—	13122
66-72	F100 / F150 4WD (w/ 2.5" rear spring)	—	13122
95-02	Explorer 2WD	13135 (Dual Leaf)	—
<b>International</b>			
60-75	p/u / Travel all 4WD	—	13122
<b>Jeep</b>			
89-97	XJ / Cherokee / Wagoneer 2WD / 4WD (mid-size)	—	13120
87-96	Wrangler YJ 2WD / 4WD	—	13160
63-92	J10 / J20 / Wagoneer / Cherokee 4WD (full-size)	—	13122
76-86	CJ-5 / CJ-7 / CJ-8 4WD	—	13120
41-75	CJ series / DJ series / MB / M38 / M38A1 2WD / 4WD	—	13170
67-73	Jeepster / C101 / C101 w/ multi leaf spring all	—	13120
<b>Land Rover</b>			
59-81	All 4WD	—	13120
<b>Mitsubishi</b>			
86-91	Montero	—	13120
82-84	p/u 2WD / 4WD	—	13120
<b>Nissan</b>			
68-97	p/u / Pathfinder 2WD / 4WD	—	13120
<b>Toyota</b>			
63-98	p/u / 86-89 4Runner 2WD / 4WD (w/ 2.5" rear springs)	—	13120
05-07	Tacoma 4WD/2WD Prerunner	—	13129

Note: Add-a-leafs will not work with steel or fiberglass mono leaves.

A Suspension Pro Accessories

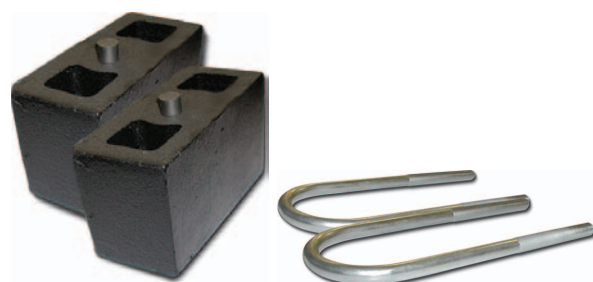


## Rear Blocks

Cast Iron (Tapered) P/N			Billet Aluminum (Non-tapered) P/N		
Lift	Pin Size	P/N	Lift	Pin Size	P/N
2.5"	9/16"	95-250B	1.0"	9/16"	95-100B
2.5"	5/8"	95-250FB	1.0"	5/8"	95-100FB
3.5"	9/16"	95-350B	1.5"	9/16"	95-150B
4.0"	9/16"	95-400B	1.5"	5/8"	95-150FB
5.0"	9/16"	95-550B	1.5"	9/16"	95-300B
			1.5"	3/4"-3/4" (1)	95-150DB
			3.0"	3/4"-3/4" (1)	95-300DB

### Notes:

Blocks ending in "F" are for Ford applications  
 Blocks ending in "D" are for Dodge applications  
 All blocks sold in pairs  
 Do not use a riser block on the front of any vehicle  
 (1) Dual pin



## Rear Block with U-Bolt Kits

All kits include 2 cast iron riser blocks (except 1" and 1.5" blocks which are constructed of T6061 Aluminum), 4 U-bolts, 8 heavy duty flat washers, and 8 hi-nuts. All blocks are tapered in order to improve vehicle driveshaft angles. Do not use blocks on the front axles of vehicles.

Year	Application	1.5" P/N	2.5" P/N	3.5" P/N	4" P/N	5.5" P/N
<b>GM</b>						
88-98	1/2 ton p/u 2WD	—	58250	—	—	—
73-87	1/2 ton p/u 4WD	—	58251	—	58401	58551
73-91	1/2 ton Blazer / Jimmy /Suburban 4WD	—	58251	—	58401	58551
73-91	3/4 / p/u / Suburban (except dually w/ 3/8" dia. axle)	—	58252	—	58402	58552
88-99	6 lug / 8 lug 4WD IFS all	—	—	—	58404	58554
<b>Ford</b>						
80-98	F150 2WD	—	22253	22254	—	—
80-96	F150 4WD	—	22255	22256	—	—
80-96	Bronco 4WD	—	22257	22258	—	—
83-97	Ranger 2WD	—	22250	22251	—	—
<b>Toyota</b>						
96-99	Tacoma 4WD	—	—	57589	—	—
93-98	T100 4WD	—	—	57589	—	—
89-94	IFS p/u short bed std. cab 4WD (3" ID u-bolts)	—	—	57789	—	—
88-95	IFS p/u 4wd (2.5" ID u-bolts)	—	—	57589	—	—
79-89	4Runner 4WD	—	—	57589	—	—
79-85	p/u 4WD	—	—	57589	—	—
<b>Dodge</b>						
03-04	2500 3/4 ton	58156	—	—	—	—



## U-Bolt Kits

U-bolt kits are packaged complete with new hi-nuts and extra thick washers. U-bolt lengths are usually adequate for stock and aftermarket leaf spring packs.

Pro Comp U-bolts are manufactured from low-alloy, high strength steel. Round style U-bolts are zinc plated; Square U-bolts are unplated in order to preserve the integrity of the steel at it's bent points. U-bolts are equivalent in strength to a Grade 5 bolt.

Year	Application	Complete Kit	Front Axle P/N	Rear Axle P/N
<b>Dodge</b>				
03-07	2500/3500	—	—	50328
<b>GM</b>				
76 <sup>1/2</sup> -87	1/2 & 3/4 ton p/u / Blazer / Jimmy / Suburban	—	58201	—
73-76	1/2 & 3/4 ton p/u / Blazer / Jimmy / Suburban	—	58101	—
87 <sup>1/2</sup> -91	Blazer / Jimmy /Suburban	—	58301	—
<b>Ford</b>				
97-98	F150 / F250 light duty	—	—	22259
<b>Jeep</b>				
84-01	Cherokee XJ (Dana 35 axle)	—	—	50055
84-01	Cherokee XJ (Chrysler 8.25 axle)	—	—	50050
87-96	Wrangler YJ	—	50060	50070
76-86	CJ all	—	50010	50020
72-75	CJ all	—	50010	50030
69-71	CJ all	—	50040	50030
53-68	CJ all	—	50040	50020
<b>Toyota</b>				
64-80	Landcruiser FJ40	50090	—	—

## Individual U-Bolts

P/N	Thread size x width x length Dimensions			Style	Finish	Used in kit #
	A	B	C			
13-90481	1/2"-20 x 3.300"	6.00"	—	round	gold zinc	55099
13-90496	1/2"-20 x 3.062"	4.50"	—	round	gold zinc	55099
13-90504	1/2"-20 x 3.062"	6.00"	—	round	gold zinc	55099
13-90508	1/2"-20 x 2.75"	7.50"	—	round	gold zinc	55099
13-90308	1/2"-20 x 2.310"	6.50"	—	round	clear zinc	50040, 13-90308A
13-90074	1/2"-20 x 2.500"	7.00"	—	round	clear zinc	55089, 50060, 13-90074A
13-90269	1/2"-20 x 2.550"	6.50"	—	round	clear zinc	50010, 50020, 50070, 13-90269A
13-90113	1/2"-20 x 2.875"	9.88"	—	round	clear zinc	22250, 22251, 13-90113A, 50113
13-90295	1/2"-20 x 2.880"	6.75"	—	round	clear zinc	50030, 50040, 13-90282A, 50295
13-90282	1/2"-20 x 3.250"	6.75"	—	round	clear zinc	50010, 50050, 13-90282A
13-90061	1/2"-20 x 3.250"	7.50"	—	round	clear zinc	55089, 50060, 13-90282A, 50061
13-90126	9/16"-18 x 2.500"	10.00"	—	square	plain	57589, 13-90126A, 50126
13-90087	9/16"-18 x 2.625"	12.50"	—	square	plain	51492-93, 51092-93-94, 13-90087A, 50087
13-90360	9/16"-18 x 2.625"	13.00"	—	square	plain	56094, 56294, 13-90360A
13-90204	5/8"-18 x 2.950"	7.80"	—	round	clear zinc	58201, 58301, 13-90204A
13-90217	5/8"-18 x 2.980"	10.62"	—	round	clear zinc	58251, 13-90217A
13-90356	9/16"-18 x 3.125"	9.25"	—	square	plain	52400, 13-90356A
13-90321	9/16"-18 x 3.250"	6.80"	—	round	clear zinc	50090, 13-90321A
13-90334	9/16"-18 x 3.250"	7.75"	—	round	clear zinc	50090, 13-90334A, 50334
13-90438	9/16"-18 x 3.250"	10.62"	—	round	clear zinc	22253, 22259, 13-90438A, 50438
13-90451	9/16"-18 x 3.250"	11.50"	—	round	clear zinc	22257, 13-90451A
13-90464	9/16"-18 x 3.250"	12.50"	—	round	clear zinc	22254, 22255, 22258, 13-90464A
13-90477	9/16"-18 x 3.250"	14.50"	—	round	clear zinc	22256, 13-90477A
13-90139	9/16"-18 x 3.331"	10.00"	—	square	plain	57789, 13-90139A
13-90347	5/8"-18 x 2.625"	14.00"	—	square	plain	58404, 58554, 51094, 51892-93-94, 58412, 13-90437A
13-90243	5/8"-18 x 3.0625"	13.50"	—	round	clear zinc	58551, 58401, 13-90243A
13-90178	5/8"-18 x 3.000"	7.50"	—	round	clear zinc	58101, 13-90178A, 50178
13-90256	5/8"-18 x 3.300"	13.50"	—	round	clear zinc	58402, 13-90256A, 58552
13-90180	5/8"-18 x 3.500"	15.75"	—	round	clear zinc	52400, 13128, 13-90180A
13-90165	5/8"-18 x 3.650"	9.00"	—	round	clear zinc	58101, 13-9016A, 50165
13-90190	5/8"-18 x 3.50"	14.50"	—	round	clear zinc	52406, 50190
13-90191	5/8"-18 x 3.650"	10.12"	—	round	clear zinc	58201, 58301, 13-90191A
13-90230	5/8"-18 x 3.370"	11.00"	—	round	clear zinc	58252, 13-90230A, 50230
13-90510	9/16"-18 x 3.125"	9.25"	—	semi-round	clear zinc	52200, 52404, 52406
13-90260	5/8"-18 x 4.062"	16.00"	—	round	clear zinc	58305
13-90370	9/16"-18 x 2.40"	6.86"	—	square	plain	51315
13-90365	9/16"-18 x 2.40"	8.09"	—	square	plain	51315, 50365,
13-90326	9/16"-3.65"x11"	—	—	round	clear zinc	58156
020100	5/16"-18 x 1.25"	2.00"	—	round	clear zinc	pair pack w/ nuts and washers
020101	3/8"-16 x 2.75"	3.17"	—	round	clear zinc	—
020102	3/8"-16 x 3.562"	4.25"	—	round	clear zinc	—
020103	5/16"-18 x 1.00"	1.595"	—	round	clear zinc	—
020105	3/8"-16 x 3.125"	3.65"	—	round	clear zinc	—
020106	3/8"-16 x 1.40"	2.50"	—	round	clear zinc	pair pack w/ nuts and washers
020107	5/16"-18 x 1"	1.75"	—	round	clear zinc	—

U-bolts have a 2+5 digit p/n. Add the appropriate last alpha-digit to the bulk number listed in the chart below.

\*13-\_\_\_\_\_ = One u-bolt (bulk, no package - no hardware)

\*13-\_\_\_\_\_A = One u-bolt with flat washers & nyloc nuts (packaged)

### Aluminum Front Coil Spacers

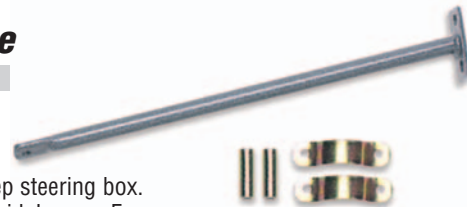
Year	Description	P/N
97-07	TJ Wrangler XJ, ZJ	55496



Ideally suited to level your vehicle. In stock form or for vehicles with winches, snow plows, motor conversions, etc. Sold in pairs.

### Steering Brace

Description	P/N
CJ	55060B
YJ	55070B



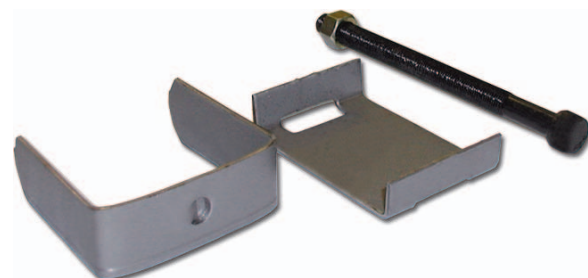
Help support your Jeep steering box. A must have for the avid Jeoper. Easy installation, complete with instructions.

### Alignment Eccentrics & Cam



Year	Application	Camber-Caster P/N	Pinion Angle P/N
05-07	Ford Super Duty 4WD	599	—
83-88/12	Ford Ranger 4WD	535	—
88/12-97	Ford Ranger 4WD*	594	—
83-96	Ford F150 4WD	532	—
99-04	Ford Super Duty 2WD	594	—
83-86	Ford F150 2WD	543	—
83-88	Ford Ranger 2WD	543	—
87-96	Ford F150 2WD	594	—
89-97	Ford Ranger 2WD*	594	—
97-06	Jeep TJ 2WD/4WD (rear)	—	20-65225

\*Pinch bolt style axle. Pro Comp Suspension alignment eccentrics are used in twin I-beam Ford applications. Cams are used in the rear of Jeep TJ's to adjust pinion angle (causing driveline vibration). All kits are sold in pairs.



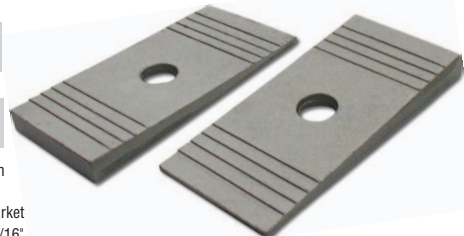
### Center Bolt & Spring Clips

Description	Dimensions	Bulk P/N	P/N
Leaf spring centering pin	5/16" dia. x 4.5" long	—	97-516B
Leaf spring centering pin	3/8" dia. x 4.5" long	—	97-380B
Leaf spring centering pin	7/16" dia. x 4.5" long	—	97-716B
Leaf spring centering pin	10mm dia. x 165mm long	—	97-165B
Leaf spring bend clip	2.5" wide	98-250	98-250B
Leaf spring bend clip	3.0" wide	98-300	98-300B

**Note:** Pair part numbers are packaged on a card for showroom display. Pro Comp recommends using new spring clips and centering pins whenever modifying or changing leaf spring packs. Our centering pins are Grade 5 bolts with a standard head and include all necessary hardware.

### Degree Shims

Description	Bulk P/N	Pair P/N
2.0 degree shim	99-200	99-200B
2.5 degree shim	99-250	99-250B
4.0 degree shim	99-400	99-400B
6.0 degree shim	99-600	99-600B



**Note:** Pair part numbers are packaged on a card for showroom display. Pro Comp degree shims are constructed of alloy aluminum are designed to align driveshaft angles with aftermarket leaf springs. Pro Comp shims centering pin hole diameter is 5/16" (some reaming of holes may be necessary). Pro Comp does not recommend using more than 3 degree shims on any front axle.



### Tailshaft Conversion

This short shaft or slip yoke eliminator kit shortens the T-case allowing you to run a 4" longer CV style drive shaft. Combined with a CV style drive shaft (sold separately) it helps eliminate driveline vibration and friction from the factory slip yoke design. It also improves driveline angles and eliminates, in most cases the need for a transfer case lowering kit. Ground clearance is improved since the skid pan is not lowered. The new main shaft is close to 20% larger than factory and can take the added torque of 4 to 1 conversions, additional horsepower and larger tires. This kit fits all 231 equipped YJ's and TJ's. It also fits XJ's with manual transmissions.

Year	Make	Lift	P/N
87-93	Jeep YJ Wrangler	4-5	4040
94-95	Jeep YJ Wrangler (52)	4-5	4041
96-06	Jeep TJ Wrangler (56)	0-4	4042

**Note:** 4041 driveshaft uses a 1.125" diameter cap (1330) on the differential U-joint and is the most common. Some vehicles may use a smaller 1.062" cap and will require P/N 4040. When using this kit it is necessary to adjust the pinion angle. If you have a Pro Comp suspension system (part # K3054, K3055, K3056, K3057) use P/N 55490 adjustable upper rear control arm to properly adjust pinion angle.

These high quality Spicer CV style drive shafts are designed to work with the tailshaft kit P/N 4007. If your vehicle or lift height is not listed you need to have one made at a driveline shop.

### Poly Lift Systems— See page 61



### Rear Leaf Springs & Applications

- \*Progressive Multi-leaf spring packs increases GVW and load carrying capacity without sacrificing ride quality.
- \*Steel encased, no maintenance rubber bushings eliminates squeak from low cost urethane bushings.
- \*Bottom overload spring provides added load capacity.
- \*Tapered leaves for increased suspension travel.
- \*Oversized Telfon mileage wear pads.
- \*Permanent angle-correcting degree shims.
- \*Shot-peened for strength and durability.
- \*Reduced axle wrap by eliminating rear lift block.
- \*Allows cost-effective way to replace rear springs and achieve desired ride height.

Application/Rear Springs	Lift	Spring Rate (lbs/in)	P/N
<b>CHEVY/GMC</b>			
88-98 1/2, 3/4, 1 ton p/u 4WD (1,6)	5" - 5.5"	192.40	13711
88-98 1/2, 3/4, 1 ton p/u 4WD (6)	3" - 3.5"	192.50	13211
69-87 1/2, 3/4, ton p/u 4WD w/52" RS (1,6)	4"	283.00	13311
92-98 Blazer/Tahoe, Jimmy/Yukon 4WD (2 Dr. only) (1,6)	4"	283.00	13311
73-91 Blazer/Jimmy 4WD (1,6)	4"	283.00	13311
69-72 Blazer/Jimmy 4WD (1,6)	2"	283.00	13311
69-91 Suburban 4WD w/52" RS (1,6)	2"	283.00	13311
69-87 1/2, 3/4 ton pickup 4WD w/52" RS (1,6)	6"	342.30	13411
92-98 Blazer/Tahoe, Jimmy/Yukon 4WD (2 Dr. only)(1,6)	6"	342.30	13411
73-91 Blazer/Jimmy 4WD (1,6)	6"	342.30	13411
69-72 Blazer/Jimmy 4WD (1,6)	4"	342.30	13411
69-91 Suburban 4WD w/52" RS (1,6)	4"	342.30	13411
69-87 3/4 & 1 ton p/u 4WD w/56" RS (1,7)	4"	377.50	13511
69-91 Suburban 4WD w/56" RS (1,7)	4"	377.50	13511
69-87 3/4 & 1 ton p/u 4WD w/56" RS (1,7)	6"	380.90	13611
69-91 Suburban 4WD w/56" RS (1,7)	6"	380.90	13611
<b>JEEP</b>			
84-01 Cherokee XJ (midsize) 2WD & 4WD (3, 4)	3.5"	245.00	53111
<b>FORD</b>			
82-96 F100, F150 4WD (2, 5)	4"	332.20	23211
82-96 Bronco 4WD (2, 5)	4"	332.20	23211
80-98 F250 4WD, 2WD (2, 5)	3" - 4"	332.20	23211
77 1/2 - 79 F250 low boy 4WD (2, 5)	3" - 4"	332.20	23211
79-98 F350 4WD (2, 5)	3"	332.20	23211
00-06 Excursion 4WD (2,8)	6"	440.20	23311
99-07 F250 Super Duty 4WD (2,8)	6"	440.20	23311
99-07 F350 Super Duty 4WD (2,8)	6"	440.20	23311
99-07 F250/F350 4WD	5"	375.00	22415
79-98 F350 4WD (2, 5)	5"	319.40	23411
77 1/2 - 79 F250 low boy 4WD (2,5)	5" - 6"	319.40	23411
80-98 F250 4WD, 2WD (2,5)	5" - 6"	319.40	23411
73-96 F100, F150 4WD (2,5)	6"	319.40	23411
78-96 Bronco 4WD (2,5)	6"	319.40	23411
<b>TOYOTA</b>			
95-97 Tacoma 4WD (3)	3" - 5"	161.08	33211
79-88 Pickup 4WD (bushing 632061) (3)	4"	213.10	33311

**Note:** Replacement degree shims and bushing sets.  
 (1) Aluminum degree wedge use P/N 90102 (2) Aluminum degree wedge use P/N 90103 (3) Aluminum degree wedge use P/N 90101  
 (4) Bushing kit P/N 90-3801 (5) Bushing kit P/N 90-3802 (6) Bushing kit P/N 90-3803 (7) Bushing kit P/N 90-3804 (8) Bushing kit P/N 90-3805

